

LIGO MACHINERY

INTERNATIOANL TRADE MADE EASY



LIGO ET60

CRAWLER EXCAVATOR

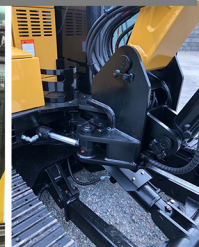
- Agriculture, construction, material handling civil engineering works and road construction
- Operating weight: 5820kg
- Power: 36kw





LIGO ET60

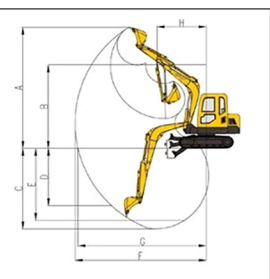
CRAWLER EXCAVATOR



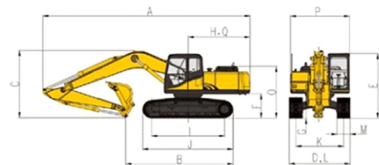
EU standard quick hitch / Third hydraulic function / Analog-Digital instruments / luxury comfort cabin / robust structure

| Engine | | Travel System | |
|-------------------------|--|----------------------------------|--|
| Model | Yanmar 4TNV94L | Travel motors | KYB, Japan; |
| Type | Direct injection, 4 stroke, water cooled, natural intake | Support roller quantities | 2x5 |
| | | Carrier roller quantities | 2x1 |
| No. of cylinder | 4 | Travel shoes | 2x37 |
| Bore and stroke | 94X110(mm) | Travel speed | 2.5/4.0(km/h) |
| Displacement | 3.054L | Drawbar pulling force | 50.4kN |
| Power output | 36.2kw/2100rpm | Gradeability | 70%(30°) |
| Max. torque | 193.2~210.6N.m/1260±100 rpm | Track shoes thickness | 6mm |
| Hydraulic System | | Cab & Electrical System | |
| Pump | KYB, Japan | Cab | installed with silicon oil rubber, adjustable luxurious seat, cold and warm air-conditioning system plus flexible pilot control system |
| Type | axial piston pump+ gear pump | | |
| Max. discharge flow | 160 (L/min) | | |
| Max. discharge pressure | | | |
| Boom, arm and bucket | 24.5 MPa | Voltage | 12V |
| Travel circuit | 18.6 MPa | Batteries | 1x12V |
| Swing circuit | 20.5 MPa | Battery capacity | 80Ah |
| Control circuit | 3.9 MPa | Boom, Arm & Bucket | |
| Pilot control pump | Gear type | Boom cylinder | Φ110xΦ65xS720-L1095 |
| Main control valves | KYB, Japan | Arm cylinder | Φ85xΦ55xS880-L1280 |
| Oil cooler | Air cooled type | Bucket cylinder | Φ80xΦ50xS600-L925 |
| Swing System | | Refilling Capacity & lubrication | |
| Swing motor | KYB, Japan | Fuel tank | 125 L |
| Swing motor type | Axial-piston motor | Cooling system | 15 L |
| Brake | Hydraulic oil released | Engine oil | 10.5 L |
| Parking brake | Hydraulic disc brake | Hydraulic oil tank | 78 L Tank Oil Level |
| Swing speed | 10 r/min | | 100 L Hydraulic System |
| Bucket | | | |
| Type | | Backhoe bucket | |
| Bucket capacity | | 0.22m ³ (SAE) | |
| Bucket Capacity scope | | 0.072-0.25m ³ | |
| Number of bucket teeth | | 5 | |
| Bucket width | | 750 mm | |

| Working Ranges | |
|--------------------------------------|---------|
| Boom length | 3050mm |
| A Max. digging height | 5889mm |
| B Max. dumping height | 4201mm |
| C Max. digging depth | 3812mm |
| D Max. vertical digging depth | 3008mm |
| F Max. digging distance | 6257mm |
| G Max. digging reach at ground level | 6102mm |
| H Min swing radius of work equipment | 2585mm |
| Digging Force (ISO6015) | |
| Arm length | 1580mm |
| A Bucket digging force | 36.7 kN |
| B Arm digging force | 26.1 kN |
| Overall Dimensions | |
| A Overall length | 5943mm |
| B Ground contact length | 3375mm |
| C Overall height(to top of boom) | 1995mm |
| D Overall width | 2000mm |
| E Overall height(to top of cab) | 2619mm |
| F Counter weight ground clearance | 740mm |
| G Min Ground clearance | 360mm |
| H Tail swing radius | 1745mm |
| I Track grounding length | 2000mm |
| J Track length | 2665mm |
| K Track gauge | 1600mm |
| L Track width | 2000mm |
| M Track Shoe width | 400mm |
| O Counter weight height | 1062mm |
| P Revolving frame width | 1790mm |
| Q Distance from swing center to tail | 1745mm |



| Operating Weight and Ground Pressure | |
|--|---------|
| Operating weight includes basic machine; | |
| Operating weight | 5820 Kg |
| Ground pressure | 34 KPa |



This picture just for reference, please according to real machine

SHANDONG LIGO MACHINERY CO.,LTD.

YUHE ROAD 261041

WEIFANG, SHANDONG, CHINA

